

Insects

Discussion Questions:

- 1) What animals belong to the insects group?
- 2) What features do they have in common?
- 3) How do insects impact on humans?



Have you ever collected insects in the garden? They are amazing creatures! Scientists have named approximately 900 000 different species of insects in the world today but they believe there are many more species that are yet to be discovered. Insects make up the largest group of animals living on the Earth.



INSECTS

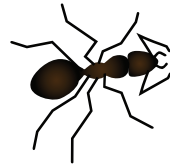
- Have an exoskeleton.
- Have six jointed legs.
- Have three body parts.
- Have one pair of antennae.
- Usually have one or two pairs of wings.

A few of the more common classes of insects:

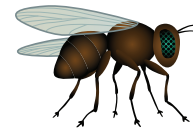
BUTTERFLIES
& MOTHS



ANTS



FLIES



GRASSHOPPERS
& MANTIDS



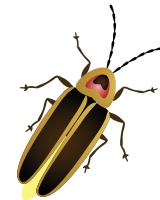
BEETLES



BEEES & WASPS



COCKROACHES



There are three main parts of an insect's body.

head

Body parts such as the eyes, pincers, antennae and mouthparts are located in this section.

abdomen

The abdomen is divided into eleven segments. The upper part of the abdomen is often protected by hard wing casings.



thorax

The thorax is divided into three segments. Each segment has a pair of legs attached to it.



Top view of a beetle



Underneath view of a beetle



Front view of a beetle

Why do people dislike and fear insects like cockroaches?



Should we kill them with insecticides?

