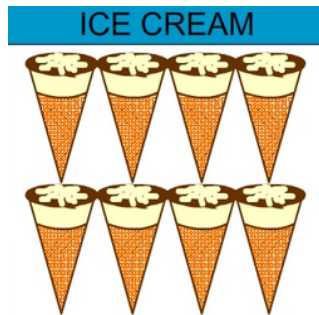


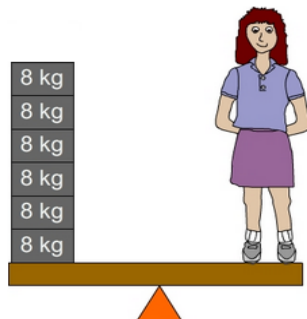
## Multiplication facts - 8's

- 1 These ice creams are sold in boxes of 8. Mrs Hartley wants to give one ice cream to each of her 59 students. What is the LEAST number of boxes she needs to buy?



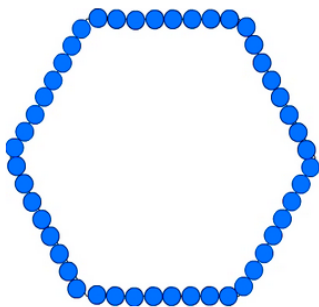
A: 8

- 3 Lana weighs the same as 6, 8 kg blocks. What is Lana's weight?



A: 48

- 5 All the sides of the hexagon shown are equal. Seb placed 8 counters along each side of the hexagon. How many counters did he use?



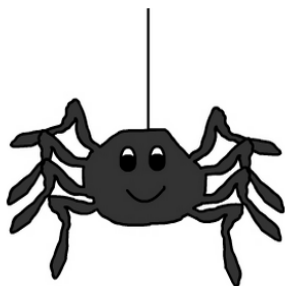
A: 48

- 7 Each player in a game is dealt 8 cards. If there are 5 players, how many cards dealt in total?



A: 40

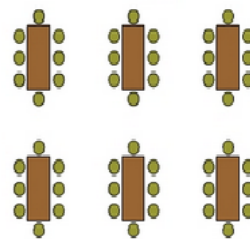
- 9 Spiders have 8 legs. If there are 8 spiders, how many legs altogether?



A: 64

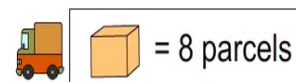
- 2 The diagram shows the seating plan for Jenny's party. There are 6 tables each with 8 guests. How many guests at Jenny's party?

seating plan



A: 48

- 4 24 parcels delivered on Monday. How many parcels delivered on Tuesday?



Monday	
Tuesday	
Wednesday	

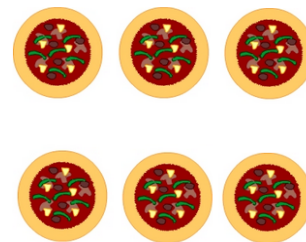
A: 16

- 6 Today, Dr Smith treated 8 patients every hour for 7 hours. How many patients did Dr Smith treat today?



A: 56

- 8 The pizzas shown are each cut into eighths. How many pieces of pizza will there be altogether?



A: 48

- 10 Greta used a wheelbarrow to move 8 loads of bricks. If each load had 12 bricks, how many bricks did she move?



A: 96