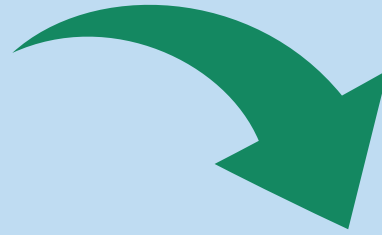
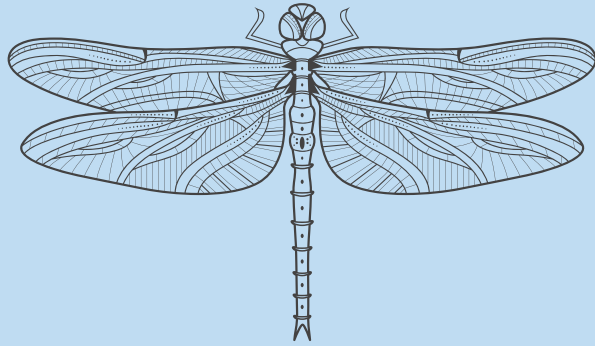


Life Cycle of a Dragonfly



adult

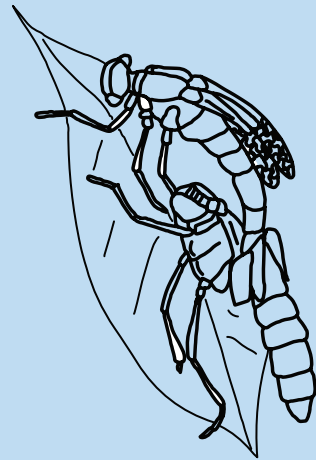


egg

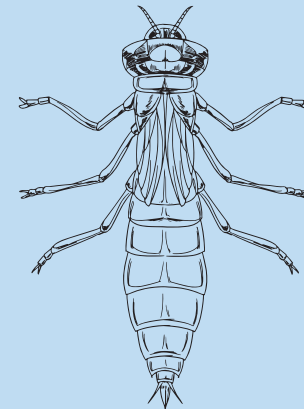
Life Cycle of a Dragonfly



nymph sheds
skin and
adult
emerges



nymph sheds
skin many
times as it
grows



nymph





After mating, dragonflies lay their eggs in a clump near a source of calm water. Sometimes dragonflies lay their eggs in the water.

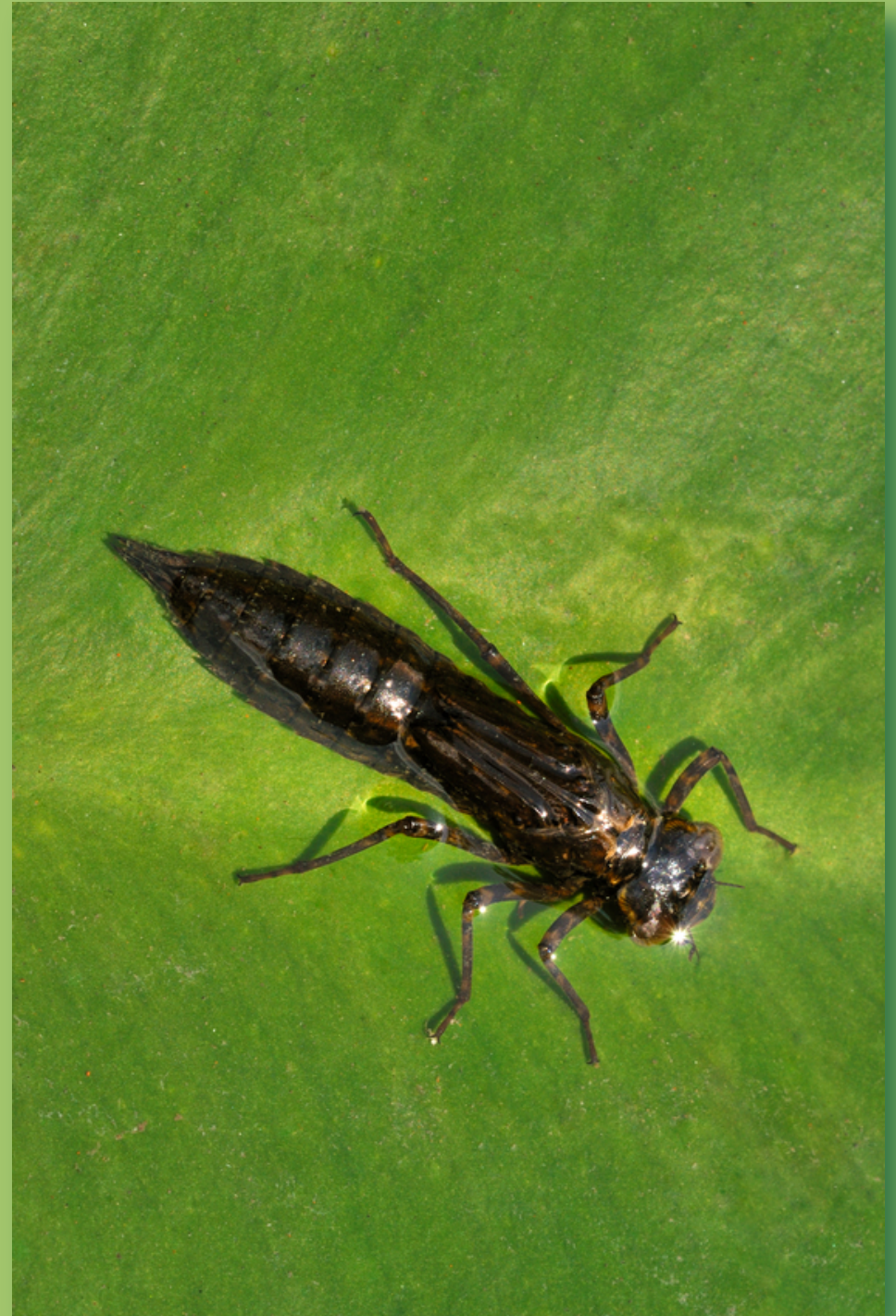
They can be found near ponds, marshes and slow running streams.



Dragonfly larva (nymphs) hatch out of the eggs after 2 - 5 weeks.

The nymphs live in the water and shed their skins up to 14 times as they grow.

Most of a dragonfly's life is spent as a nymph. It can take up to a year for them to grow big enough to become an adult.





When the nymph is fully developed it will attach itself to a nearby plant and prepare to shed its skin a final time.

However, this time the dragonfly emerges as a fully developed adult. The dragonfly's body is soft at this stage and the wings are small.

The Dragonfly sits and waits for it's legs to harden and body fluids to pump out its wings before flying off to look for food.



The final stage of the dragonfly's life cycle is the shortest. They only live for a few weeks in their adult stage.

During this time they look for a mate and return to the water environment to lay eggs.

