



# Where Do Polar Bears Live?

Polar bears are only found in the Arctic region, around the north pole.



# The Arctic Region

The polar cap consists of frozen sea ice. The ice can extend as far as the most northerly land masses of the continents that surround the arctic region.

Polar bears can be found in the northern parts of Canada, Alaska (USA), Greenland, Russia and the Svalbard archipelago (Norway).

Polar Bears are able to travel great distances to reach their hunting grounds on the sea ice.



The north pole is permanently covered by a cap of frozen seawater. The size of the ice cap has always experienced seasonal changes. It increases in size during the cold winter months and becomes smaller when the ice thaws in summer.

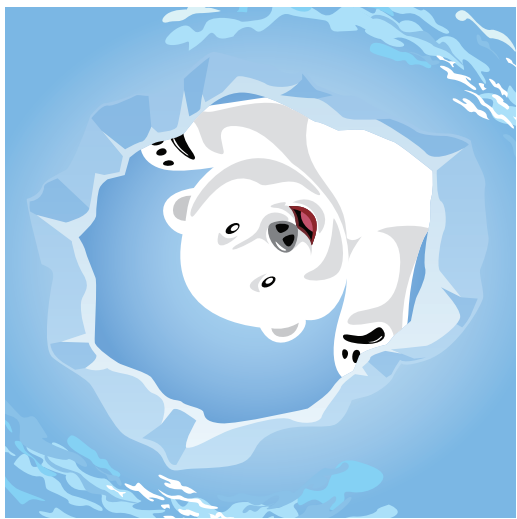


# Global Warming

Temperatures on our planet have been increasing in recent years. This has led to greater volumes of thawing ice in the polar regions.

Scientists are concerned that global warming may cause irreversible changes that will permanently reduce the size of the polar caps and increase sea levels.





# HOW WILL GLOBAL WARMING AFFECT THE EARTH'S POLAR BEAR POPULATION ?

