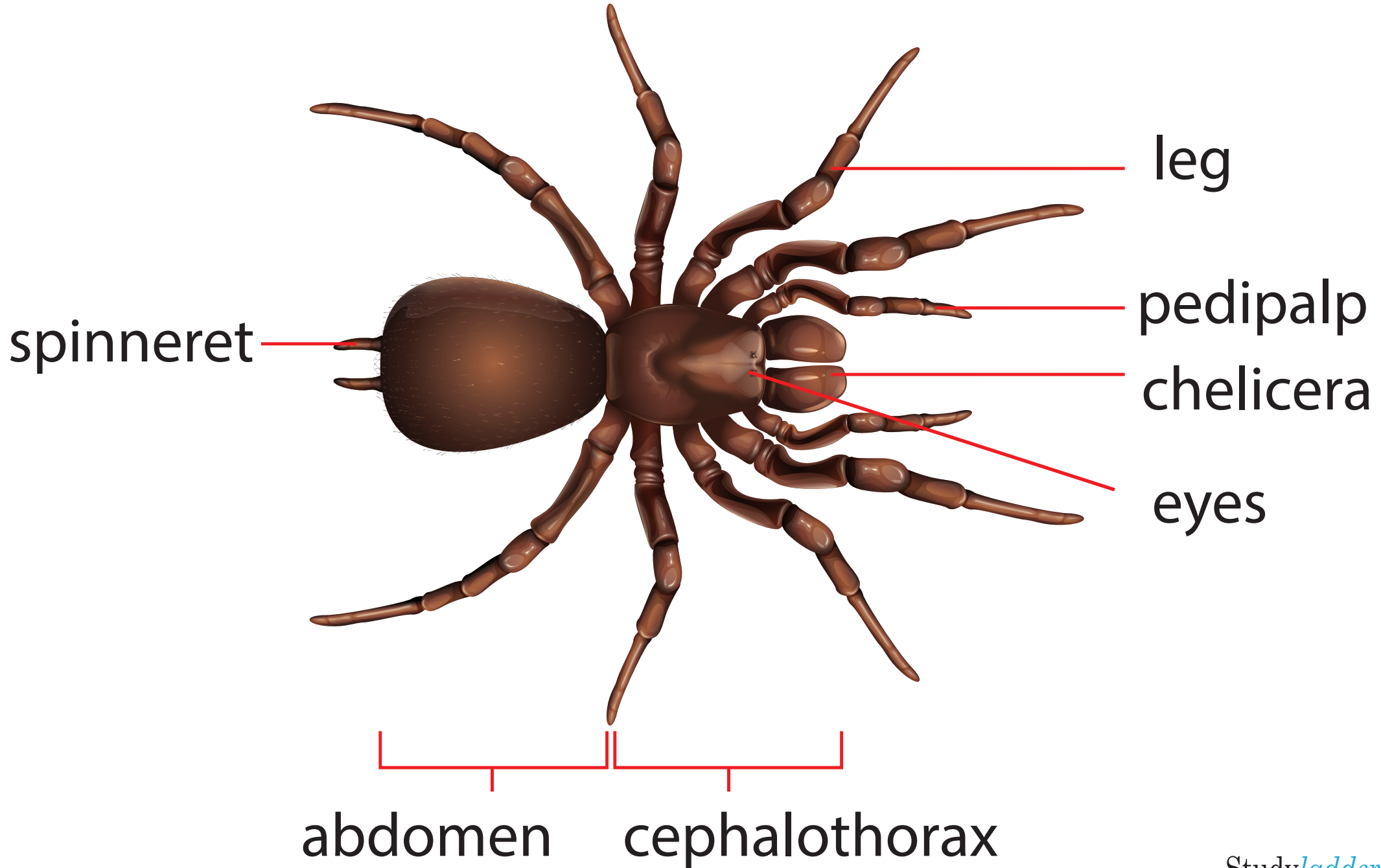


# Spider Anatomy



Study*ladder*

# Spider Body Parts

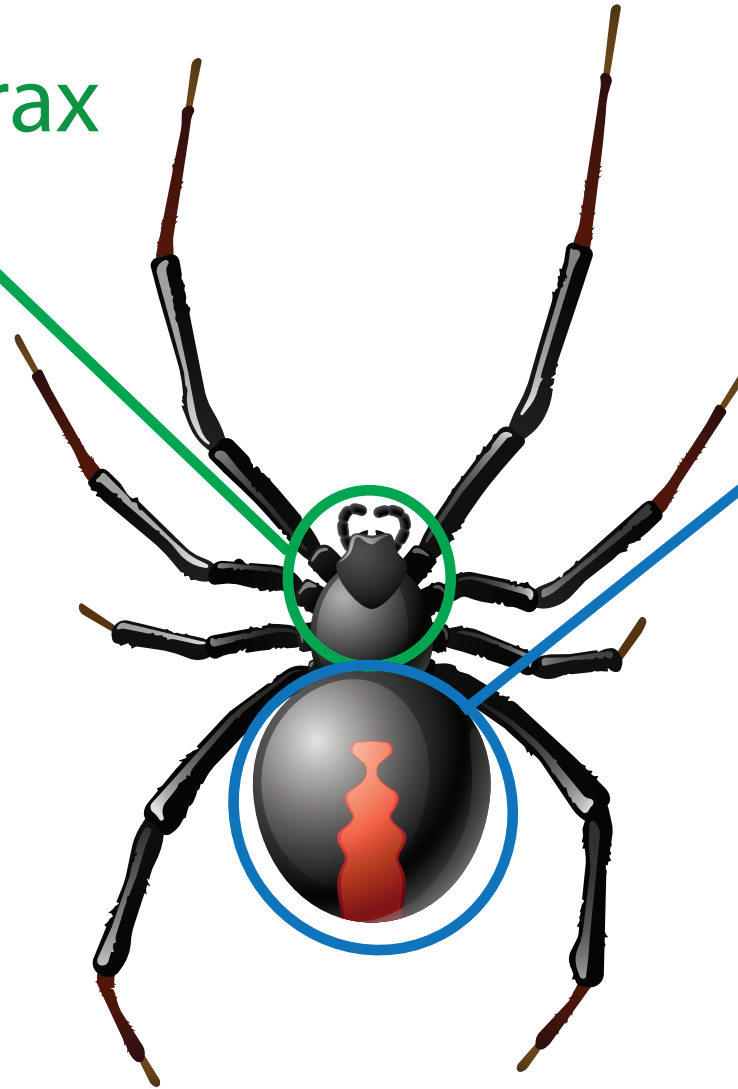


# There are two sections to a spider's body:

## The cephalothorax

The cephalothorax contains these organs:

- stomach
- brain
- venom glands



## The abdomen

The abdomen contains these organs:

- heart
- lung
- intestines
- reproductive organs
- silk glands

# What body parts can be seen on the cephalothorax?



## Chilicerae

The chilicerae are the mouth parts or jaws of the spider. The fangs are located at their tips and these connect to the venom glands inside the body. The spider uses the muscular jaws of the chilicerae to latch onto prey, or something it sees as a threat.

## Eyes

The spider's eyes are located at the front of the cephalothorax. Most spiders have eight eyes. Some species have six or fewer eyes.

Spiders generally do not have good eyesight. Most can only distinguish between light and dark. They rely on vibrations and taste to help them navigate and catch their prey.

## Legs

The spider's legs are attached to the underside of the cephalothorax. Spiders have eight legs. Each leg has seven segments. Spiders don't get stuck in their webs as they only make contact with the claws and hairs at the very tips of their legs.

