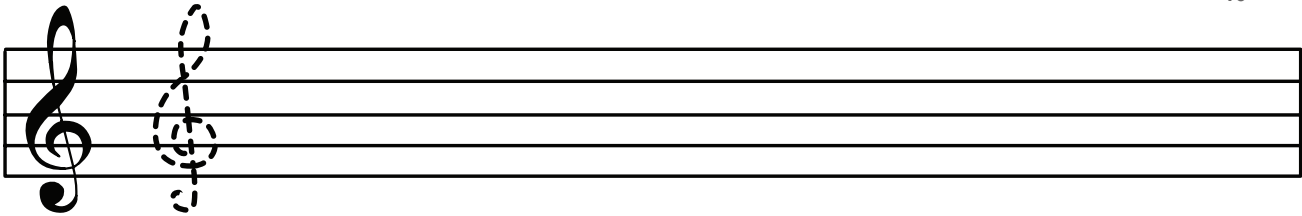
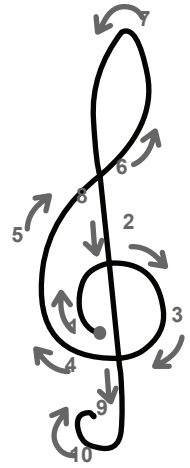
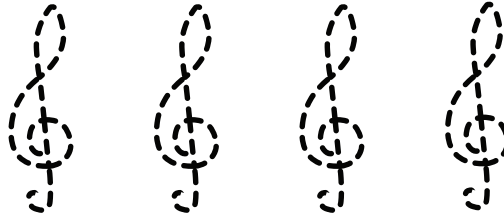


Name: \_\_\_\_\_ Date: \_\_\_\_\_

## The Treble Clef

The treble clef is placed at the beginning of every treble staff.  
The beginning of the clef curls around the second line of the staff.

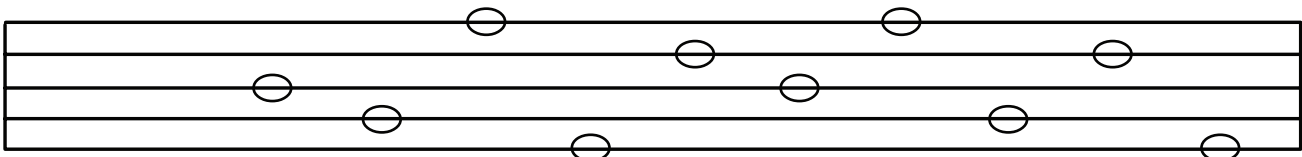
Trace these treble clefs then practise drawing treble clefs on the staff below.



## Notes on the Treble Staff

Some notes are placed on the lines of the staff. Remember the acoustic:  
Every Good Boy Deserves Fruit.

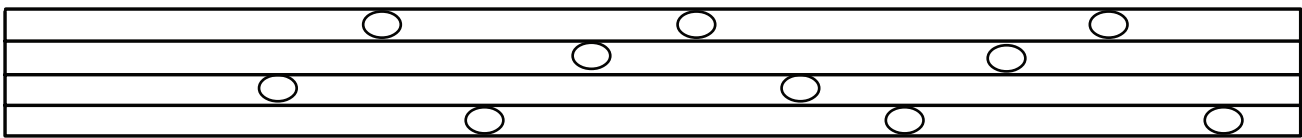
Draw a treble clef at the beginning of the staff.  
Trace and colour the notes on the lines of the staff.  
Write the names of the notes.



B

Some notes are placed in the spaces between the lines of the staff.  
Remember the letters spell the word: F A C E

Draw a treble clef at the beginning of the staff.  
Trace and colour the notes in the spaces between the lines of the staff.  
Write the names of the notes.



A