

POPSICLE PICTURE PUZZLE

What you will need:

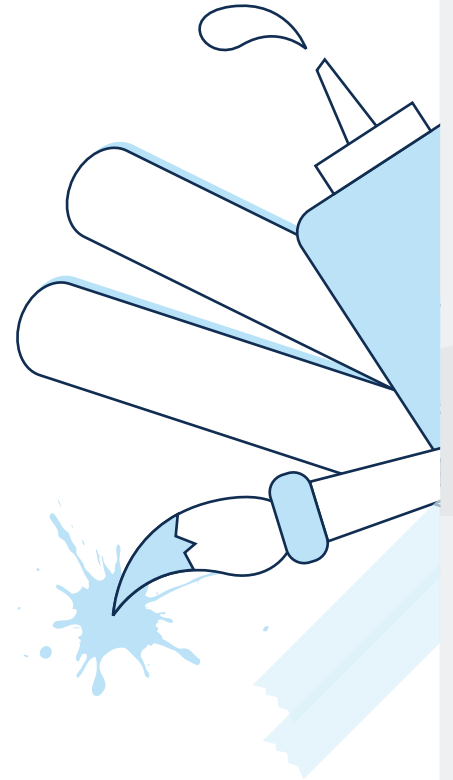
Popsicle Sticks

Craft Glue

Sticky Tape

Craft knife/blade (we recommend the Teacher or Parent uses this)

A photo of you with your dad or just a photo of something you love



Directions:

Step 1:

Lay the popsicles out flat and side by side. Make sure they are even at the top and bottom.

Step 2:

Put tape across the top and bottom of the sticks to hold them together and then flip it over.

Step 3:

On the non taped side, glue the photo onto the popsicle sticks that you have lined up. Make sure you put glue on the back of the photo including the edges.

Step 4:

Place under a heavy book until it dries. This will make sure the photo is glued down properly. Then once it has dried, pull the sticky tape off the back.

Step 5:

Using the craft knife, cut the popsicle sticks apart (we recommend that the Teacher or Parent does this). Then mix up the sticks and create a puzzle to solve.

