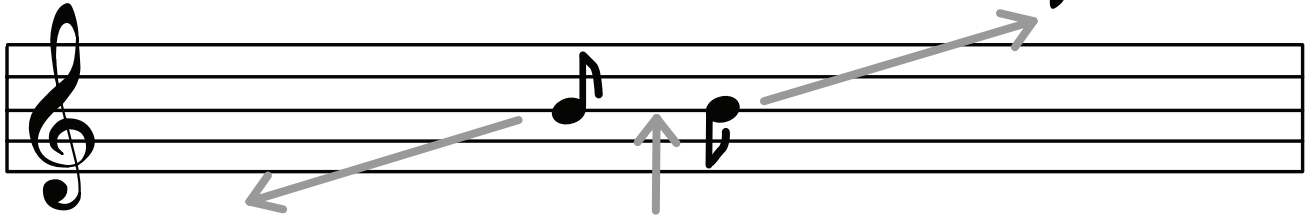



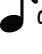

Name: \_\_\_\_\_ Date: \_\_\_\_\_


## Quavers

Single quavers can be drawn with tails up  and tails down. 



Below middle line:  
Use up stems 

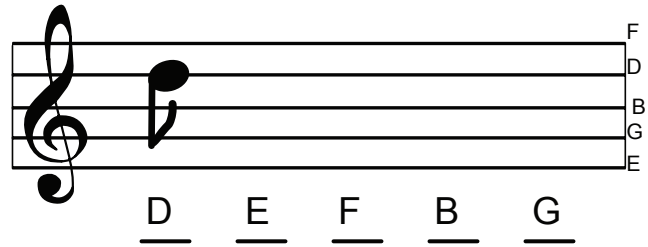
On middle line:  
Use either  or 

Above middle line:  
Use down stems 

Draw 10 single quavers with tails up \_\_\_\_\_

Draw 10 single quavers with tails down \_\_\_\_\_

Draw single quavers on the correct parts of the treble staff. (Be careful with the tails)



Quavers can be grouped and joined together with a straight line.

  Each group has \_\_\_\_\_ quavers.

Draw 5 pairs of quavers with tails up \_\_\_\_\_

Draw 5 pairs of quavers with tails down \_\_\_\_\_

Draw pairs of quavers on the correct parts of the treble staff.

